

**CTBP2 Antibody (N-term)**  
**Affinity Purified Rabbit Polyclonal Antibody (Pab)**  
**Catalog # AP12902a****Specification**

---

**CTBP2 Antibody (N-term) - Product Information**

Application	IHC-P, WB,E
Primary Accession	<a href="#">P56545</a>
Other Accession	<a href="#">Q9W758</a> , <a href="#">Q9EQH5</a> , <a href="#">P56546</a> , <a href="#">Q0VCO1</a> , <a href="#">NP_073713.2</a> , <a href="#">NP_001320.1</a>
Reactivity	Human
Predicted	Bovine, Mouse, Rat, Xenopus
Host	Rabbit
Clonality	Polyclonal
Isotype	Rabbit IgG
Calculated MW	48945
Antigen Region	1-30

**CTBP2 Antibody (N-term) - Additional Information****Gene ID** 1488**Other Names**

C-terminal-binding protein 2, CtBP2, CTBP2

**Target/Specificity**

This CTBP2 antibody is generated from rabbits immunized with a KLH conjugated synthetic peptide between 1-30 amino acids from the N-terminal region of human CTBP2.

**Dilution**

IHC-P~~1:10~50

WB~~1:1000

E~~Use at an assay dependent concentration.

**Format**

Purified polyclonal antibody supplied in PBS with 0.09% (W/V) sodium azide. This antibody is purified through a protein A column, followed by peptide affinity purification.

**Storage**

Maintain refrigerated at 2-8°C for up to 2 weeks. For long term storage store at -20°C in small aliquots to prevent freeze-thaw cycles.

**Precautions**

CTBP2 Antibody (N-term) is for research use only and not for use in diagnostic or therapeutic procedures.

**CTBP2 Antibody (N-term) - Protein Information**

**Name** CTBP2

**Function** Corepressor targeting diverse transcription regulators. Functions in brown adipose tissue (BAT) differentiation (By similarity).

**Cellular Location**

Nucleus. Synapse.

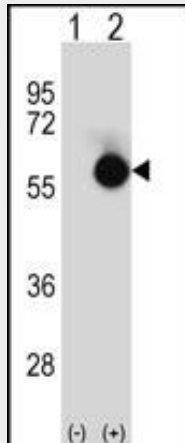
**Tissue Location**

Ubiquitous. Highest levels in heart, skeletal muscle, and pancreas

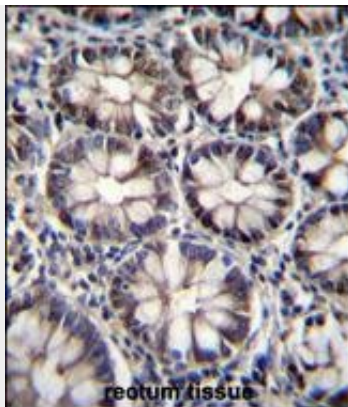
**CTBP2 Antibody (N-term) - Protocols**

Provided below are standard protocols that you may find useful for product applications.

- [Western Blot](#)
- [Blocking Peptides](#)
- [Dot Blot](#)
- [Immunohistochemistry](#)
- [Immunofluorescence](#)
- [Immunoprecipitation](#)
- [Flow Cytometry](#)
- [Cell Culture](#)

**CTBP2 Antibody (N-term) - Images**

Western blot analysis of CTBP2 (arrow) using rabbit polyclonal CTBP2 Antibody (N-term) (Cat. #AP12902a). 293 cell lysates (2 ug/lane) either nontransfected (Lane 1) or transiently transfected (Lane 2) with the CTBP2 gene.



CTBP2 Antibody (N-term) (Cat. #AP12902a) immunohistochemistry analysis in formalin fixed and paraffin embedded human rectum tissue followed by peroxidase conjugation of the secondary antibody and DAB staining. This data demonstrates the use of CTBP2 Antibody (N-term) for immunohistochemistry. Clinical relevance has not been evaluated.

#### **CTBP2 Antibody (N-term) - Background**

This gene produces alternative transcripts encoding two distinct proteins. One protein is a transcriptional repressor, while the other isoform is a major component of specialized synapses known as synaptic ribbons. Both proteins contain a NAD<sup>+</sup> binding domain similar to NAD<sup>+</sup>-dependent 2-hydroxyacid dehydrogenases. A portion of the 3' untranslated region was used to map this gene to chromosome 21q21.3; however, it was noted that similar loci elsewhere in the genome are likely. Blast analysis shows that this gene is present on chromosome 10. [provided by RefSeq].

#### **CTBP2 Antibody (N-term) - References**

Bao, B.Y., et al. Clin. Chim. Acta 411 (17-18), 1232-1237 (2010) :  
Liu, H., et al. Prostate (2010) In press :  
Kim, S.T., et al. Prostate (2010) In press :  
Gallagher, D.J., et al. Clin. Cancer Res. 16(10):2819-2832(2010)  
Kitamura, F., et al. Int. Arch. Allergy Immunol. 152 SUPPL 1, 18-21 (2010) :